

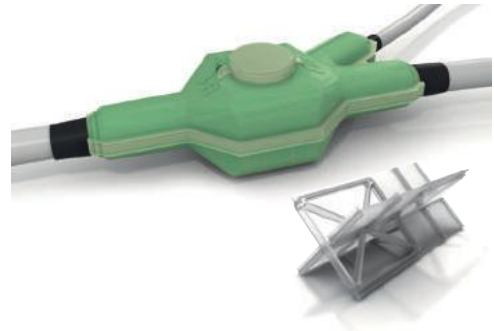
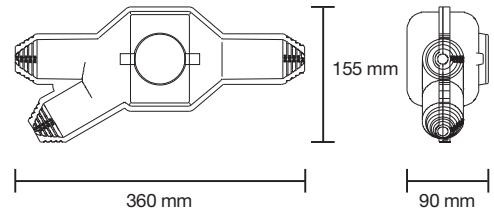


- Complies with the standard for 0.6/1 kV low voltage joints (CEI EN 50393)
- Protection level: equivalent to IPX8 (EN 60529)
- Operating temperature: -20 to 90 °C
- Shelf life: 3 years
- Available with:
 - Solid state polyurethane resin 
 - Re-enterable polybutadiene resin 

Diameter of main cable (min - max): 13 - 45 mm
 Diameter of branch cable (min - max): 13 - 45 mm



SKB3

Cast resin joint for Y branch connections
 phase separator included



code SKB3
code SKB3R

Applications





- Single core cables
- Multicore cables up to 4 cores
- Installation underground, overhead

Advantages

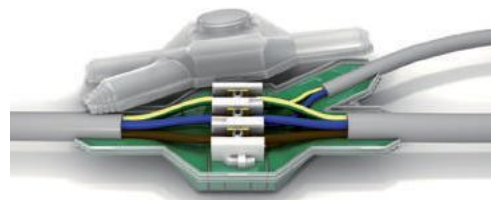
- Excellent insulating properties
- Watertight joint seal
- Excellent corrosion protection
- Excellent mechanical strength

Kit contents

- Two transparent polypropylene shell halves
- Modular phaseseparator
- Bag with two-component solid state resin
- **Direct Injection casting system (DICS)**
- Insulating tape
- Latex protective gloves
- Instructions

APPLICATION TABLE						
number of conductors	Cable diameter Ø (mm)		Conductor cross section (mm ²)			
	main	branch	min		max	
			main cable	branch cable	main cable	branch cable
	13 - 45	13 - 45	50	50	400	400
			25	25	150	150
			120	120		
			95	95		

Cross sections measured using FG7 flexible cables



B30435

Cast resin joint for Y branch connections
 5 pole insulated terminal block included



code B30435
code B30435R

Applications


- Five-core cables
- Installation underground, overhead

Advantages

- Excellent insulating properties
- **Double insulation**
- Watertight joint seal
- Excellent corrosion protection
- Excellent mechanical strength

Kit contents

- Same contents as the SKA3 kit, including:
- **Preassembled** 5 pole insulated terminal block
 - Allen key for tightening terminal block screws

APPLICATION TABLE						
number of conductors	Cable diameter Ø (mm)		Conductor cross section (mm ²)			
	main	branch	min		max	
			main cable	branch cable	main cable	branch cable
	13 - 45	13 - 45	10	2.5	35	35

Cross sections measured using FG7 flexible cables